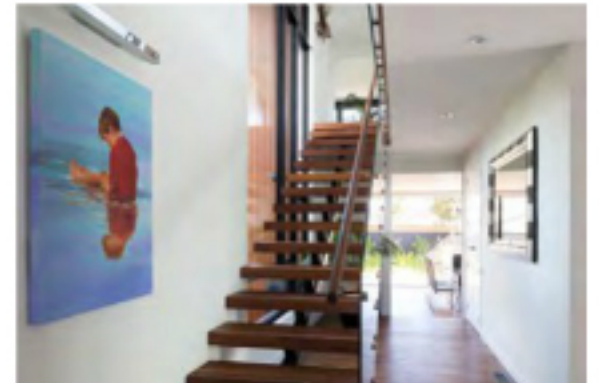


TRENDS[®]

kitchen bathroom home

VOLUME 33 NO. 3(N)





Vibrant welcome

Lush tropical gardens surround this home, while a gleaming red door provides a stand-out entry – one of several uses of Resene paint indoors and out

Beautiful house, but where's the front door? That's certainly not a question asked by guests approaching this contemporary home by Architecture Smith + Scully. The vibrant entry door is finished in Resene Jalapeno, a colour that's repeated on the kitchen splashback.

Director Hilary Scully says Resene Jalapeno offered a strong feature accent for the garden-surrounded home.

However, the eye-catching front door and back-painted glass splashback are not the only strong paint stories in this home.

Contrasting the cedar cladding, Scully chose Resene Lumbersider in Resene Black for the garage door and Resene Pitch Black wood stain for the trim and batons.

"In a sense, the paint theme is black and white – black on the exterior, white on the interior," says Scully. "The hall, living room, kitchen and most bedroom walls are in Resene Half Merino."

Resene SpaceCote Low Sheen in Resene Merino was chosen for the laundry and bathroom for its durable low-sheen finish. Doors and trims throughout the home

are in hard-wearing Resene Lustacryl.

"We usually specify Resene for our projects. They have great staff who are helpful with advice and specifications. Plus Resene has an evolving colour range," says Scully.

Visit the website: www.resene.co.nz

T save and share online: search **48949** or **resene** at **TRENDSideas.com**

Above: Resene Jalapeno, Resene Lumbersider Black, and Resene Merino are just some Resene colours used in this home by Architecture Smith + Scully.