

01 The lounge in the large living pavillion, and the covered deck and garden beyond.

PROJECT

01

Point Chev **HOUSE by** **Architecture** **Smith + Scully**

• AUCKLAND •

Carolyn Smith has designed a family house that makes the most of a small, steep site.

Photography by [Patrick Reynolds](#)

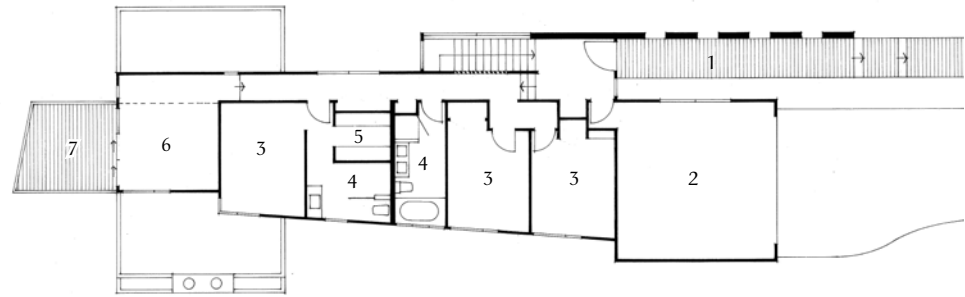




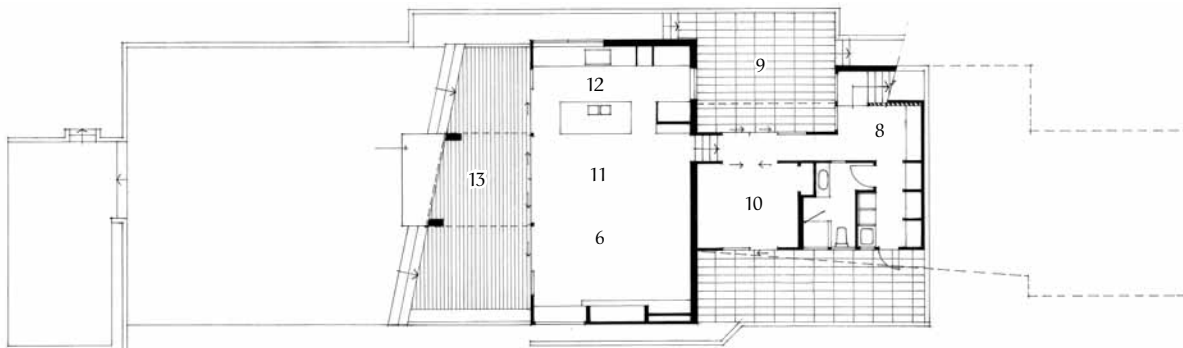
02 The street elevation of the Point Chevalier house designed by Architecture Smith + Scully.



- 1 Entry walkway
- 2 Garage
- 3 Bedroom
- 4 Bathroom
- 5 Dressing room
- 6 Living
- 7 Upstairs deck
- 8 Homework bay
- 9 Morning courtyard
- 10 Guest room/living
- 11 Dining
- 12 Kitchen
- 13 Covered deck



Upper floor plan



Lower floor plan

Houses old, new, big, small, shabby, and chic; Auckland's Point Chevalier has them all. When you build a house here, it does not need to adhere to type. In the case of this house, designed by architect Carolyn Smith of Architecture Smith + Scully, this was a lucky break as the section came with plenty of restrictions. The site is only 12 meters wide and slopes away from the road. Height to boundary restrictions played a significant part in the long, low profile of the house, and the stepped down lower storey.


The house sits lower than the street and cuts a discreet, modest figure. This was important to the clients, who did not want the house to be intrusive on the street or to the neighbours. A stepped boardwalk leading to the bright red front door is timber framed for shelter and privacy. Columns and clever lighting create a series of interesting shadows along the pathway, that at night appears to float a little.

The dark stained timber is continued inside the entryway forming a link from outside and a visual cue to lead visitors downstairs to the living areas. On the top level there are three bedrooms and two bathrooms. They all run off a long hallway that is cleverly lit and protected from the neighbours with a pale timber screen. At the end of the hallway a warm, sun filled lounge that the clients wanted to

relax in with books and records, makes the most of the glimpses of sea that the section offers. Doors lead out onto a large balcony.

Descending the stairs you look through large windows into the outdoor breakfast room - a sheltered courtyard framed with black timber and large panels that are a bright, sunny green. The green is repeated in the service courtyard accessed through the laundry. Downstairs a homework area is cleverly tucked in beside the stairs. Off another hall runs a laundry, guest bedroom and bathroom, and at the north-west end a large family kitchen, living and dining room.

The living area takes up the maximum width of the footprint and feels very open and expansive. At one end, the kitchen is a sleek modern space, with an island separating it from the dining table in the middle. The other end of the room houses a large lounge area with a gas fire and window seat. The material palette, including an acoustic ceiling panel above the dining table, is made up of soft neutral tones. Floor to ceiling glass sliding doors lead out onto a deck and the garden.

Looking at the house from the back lawn, it stands much taller and reveals more of what is inside. The link between indoor and out is strongest here, without compromising on privacy. Smith has created a warm, inviting house and used the site restrictions to create a series of cleverly unfolding spaces. 

03 Large sliding doors open the dining and kitchen area onto a sheltered deck.







- 04 The neutral colour palette of the kitchen blends seamlessly with the large living space.
- 05 The tall end of house viewed from the garden.





06 The tucked-away study area with the timber screen and stairs behind it.

Architect:

Architecture Smith + Scully Ltd
6/6 Kingsland Terrace, Kingsland,
Auckland 1021
09 845 6249
www.smith-scully.com

Practice profile:

Architecture Smith + Scully Ltd is a design-led practice specialising in residential, interior and hospitality projects. We aim to provide high quality, appropriate and thoughtful design with attention to personal service. We consider each client, brief and site as a unique opportunity, and believe successful design will enhance peoples daily lives through the quality of their environment.

Project team:

Carolyn Smith, Craig Jansen,
Kristan Deed, Norrie Johnson

Engineer:

D J Shilton Consulting Engineers

Consultants:

Geo-Tech Engineers – Tonkin &
Taylor, Soil Engineering
Planning – Lane Associates
Landscape Architect – Trish
Bartleet Landscape Design
Interior Fit-out Design –
Architecture Smith + Scully

Builder:

Priority One Construction –
George Levick

Products

External walls: Hermpac Pacific –
Resene Machine-Coated rusticated
weatherboards (uses Resene Cool
Colours); Eterpan Express-Clad
paneling

Flooring: Tasmanian Oak

Windows & doors: APL Vantage

Metro & Architectural Series, double-
glazed anodized aluminium joinery

Walls: Gib® Ultraline & Aqualine

Ceiling: Gib® Ultraline, paint finish,
feature ceiling: Decortech Acoustic
timber paneling

Roofing: Dimond Styline profiled
powder-coated metal roofing &
Nuraply 3PM to flat roofs

Kitchen & Bathroom: designed
and detailed by Architecture
Smith + Scully, Cabinetry by R H
Cabinetmakers

Lighting: Aesthetics Lighting

Fireplace: Flameworks

Steel & wire balustrades: Contab
International Ltd

Time schedule

Design & Planning: 12 months

Construction: 11 months

Project areas:

Site Size: 731m²

Building area: 275m²

Comfort is... simply another name for Stressless®

Words like wellbeing, weightlessness and total relaxation come to mind the moment you sit down in a Stressless® recliner. The natural soft leather and cushion ooze cosy comfort. The gentle swing is controlled with effortless ease. And the smoothness of the reclining function reveals the full potential of the superior technology - adding the right body support in any position. Stated succinctly, the comfort offered by a Stressless® recliner from Norway is the key to a more comfortable you. Take our word for it and try one at your local Stressless® studio soon. Because feeling *is* believing.



100% MADE IN NORWAY!
THE ORIGINAL AND THE BEST SINCE 1971



THE INNOVATORS OF COMFORT™



STRESSLESS®
Kensington



STRESSLESS®
Wing



STRESSLESS®
Reno



STRESSLESS®
Magic

Custom made to order. A wide range of styles, leather colours, fabrics and wood finishes are available, allowing you to match the décor in your home. A selected range is available for immediate delivery.

STRESSLESS® STUDIOS

DANSKE MØBLER

Auckland 983 Mt Eden Road, Three Kings. Ph 09 625 3900 • 13a Link Drive, Wairau Park. Ph 09 443 3045
501 Ti Rakau Drive, Botany Town Centre. Ph 09 274 1998 • **Hamilton** 15 Maui Street, Te Rapa. Ph 07 847 0398
Taupo 29 Totara Street, Totara Point. Ph 07 378 3156
Lower Hutt Level 1, Harvey Norman Centre, 28 Rutherford Street. Ph 04 568 5001

Whangarei Fabers Furnishings **Tauranga** Geerton Furnishings **Rotorua** Van Dyks **Gisborne** Fenns **Napier** Danks Furnishers
New Plymouth Cleggs **Wanganui** Wanganui Furnishers **Palmerston North** Turnbull Furniture **Masterton** Country Life Furniture
Wellington Fifth Avenue **Blenheim & Nelson** Lynfords **Christchurch** D.A. Lewis • McKenzie & Willis • **Timaru** Ken Wills Furniture
Dunedin McKenzie & Willis **Queenstown & Invercargill** H & J Smith

www.stressless.co.nz

NZ DISTRIBUTOR

DANSKE
MØBLER