

01 & 02

A pared-back material palette was chosen for the three bathrooms of this new home. Colour accents customise each space providing contrast.



PROJECT

05

Mellons Bay BATHROOM by Architecture Smith + Scully

• AUCKLAND •

A shared palette of materials gives these bathrooms cohesion, while individual colour schemes give them character.

Words by [Justin Foote](#)
Photography by [Samuel Hartnett](#)

02





03 For the main bathroom, Smith chose a vessel basin and darker accent colour for a more sophisticated look.



04 A vibrant green was chosen for the downstairs bathroom. A walk-in shower with single glazed panel keeps the space low maintenance.


“You know what I like”, was the brief architect Carolyn Smith received from a long-term friend and first-time client when approached to design a new family home. “It’s one of those statements you both dread and hope to hear as an architect,” says Smith with a wry smile. “Luckily, in this instance, the result is exactly what the client envisioned.”

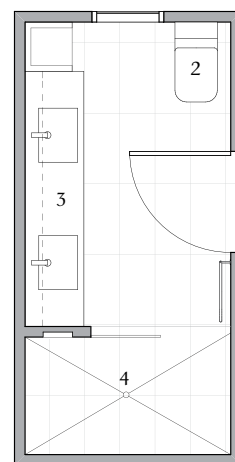
The new home was to include three bathrooms – an ensuite, shared bathroom for the children and a main bathroom.

“This is a busy family, so I knew that low maintenance was of prime importance. Also, the spaces should be contemporary but with an inherent warmth.”

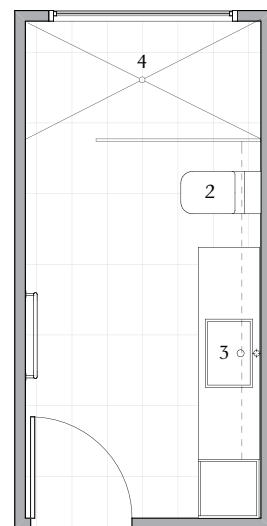
In keeping with the modern feel, Smith specified Caesarstone for the vanities with recessed handles for the cabinetry. Back-painted glass splashbacks create a seamless look that has multiple benefits.

“Splashbacks are a great idea for a bathroom, they are quick and easy to clean, can be used to inject an area with colour and, perhaps best of all, are easily removed when you decide to update the look.”

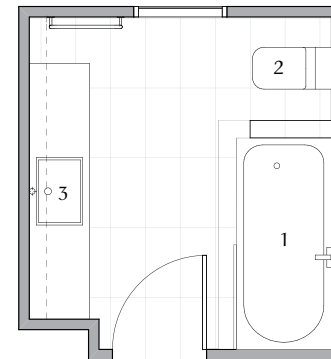
Mosaic tiles were also used to introduce a touch of colour in a range of tones tied to each bathroom’s primary accent colour. Uniform floor tiles are another visual link between the bathrooms, while the dark grouting is a contemporary element. 



Ensuite plan



Lower bathroom plan



Upper bathroom plan

- 1 Bath
- 2 WC
- 3 Vanity
- 4 Shower

Practice

Architecture Smith + Scully
6/6 Kingsland Terrace
Auckland 1021
09 845 6249
smith-scully.com

Practice profile

Architecture Smith + Scully is a creative, design-driven practice, focusing primarily on residential design – ranging from beach houses and large luxury homes to compact inner-city townhouses. We also have extensive experience in residential interior design as well as retail and commercial fit-outs.

Project team

Carolyn Smith, Craig Jansen

Products

Vanity: Ice Snow by Caesarstone from Contour Surfaces
Cabinetry: Tasmanian oak veneer with solid clashing by Quality Cabinetmakers
Bath: Newbury by Caroma
Basin: Cygnet vessel basin by Ideal Standard and GEA undermount basins from Robertson
Tapware: Sly by Paffoni
Toilet: Parliament by Kohler
Tiles: Fossil Grey by BBM from Independent Ceramics; Emerald Glamour and Pearl White mosaics from Tile Warehouse; lime green mosaics from Heritage Tiles
Lighting: Quattro wall-mounted mirror lights from Concept Lighting Architecture

Windows and doors:

Premier Aluminium Joinery
Accessories: AK0981 handles by Stefano Orlati
Glass splashbacks: Back-painted in Resene Ashanti, Resene Minx and Resene Chameleon from Haynes Glass

Time schedule

Design & Planning: 12 weeks
Construction: 11 months

Project areas: 8.4m² (lower bathroom), 7.3m² (main bathroom), 6.4m² (ensuite)