

01 The ensuite bathroom features a slim and sleek washplane.

PROJECT

# 06

## *Epsom* HOUSE by Architecture Smith + Scully

• AUCKLAND •

Function is paired with fine finishes in the bathrooms and laundry of this Epsom house.

Words by [Claire Ellery](#)

Photography by [Samuel Hartnett](#)

**A**rchitect Hilary Scully of Architecture Smith + Scully designed this house in the Auckland suburb of Epsom for a family of five.

The bathrooms – a guest, family and ensuite – and a family-sized laundry room all share a great deal of attention to detail and finishing quality. The guest room and laundry are on the ground floor. They both have glass mosaic tiles on the wall that are a cool palette of mushroom brown and pale green.

The laundry is a generous working space, with a large bench along one wall and hidden cabinets on the other. These are for all the usual laundry storage but also for storing each family member's laundered clothes until they are collected by their owner. A laundry chute across the hall makes sure said family member's laundry makes it to the room easily.


The family bathroom is upstairs, located between mirrored bedrooms occupied by the clients' sons. It is the twin of the guest bathroom in the use of materials. It has

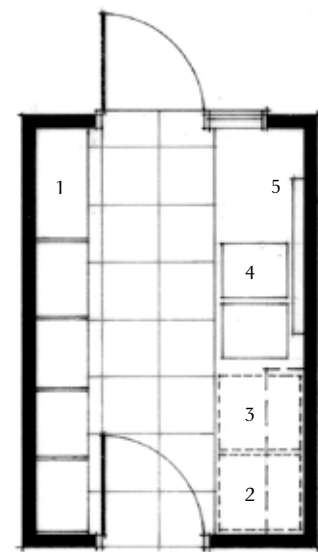




the mosaic tiles from downstairs and a luxurious large tile that is cream with a texture which gives it a linen-like look. The guest bathroom has similar tiles that have a slightly different woven finish.

The ensuite bathroom is a change of pace from the others with a mix of textured white and slick black tiles. The clients wanted this room to be a bit different and sought out fine fixtures like the long, lean washplane. This doesn't provide any opportunity to clutter up the sink edge with toothpaste and the like, but Scully has taken care of that with hidden cabinets behind the mirror.

The shower is a large walk-in space lined with white tiles that have a highly textured finish. These create a sparkling shimmer in the light. The light pours into the shower from a skylight and a tall triangular window. In this room you can listen to the radio, piped in from a panel above the shower, while you prepare for the day. 



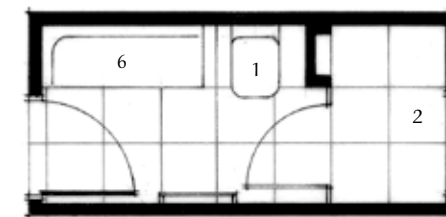
Laundry plan

- 1 Storage cupboards
- 2 Dryer
- 3 Washing machine
- 4 Stainless steel bench and sinks
- 5 Drying rack



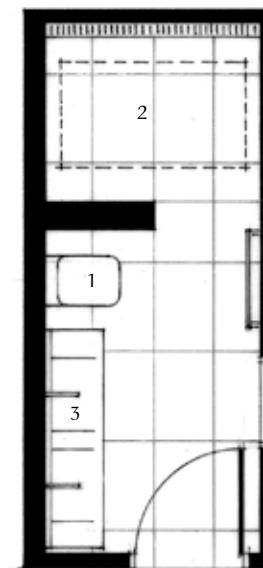
02 The family bathroom has private views through to the trees of a neighbouring orchard.

03 The laundry repeats colours and materials from the guest bathroom next door.

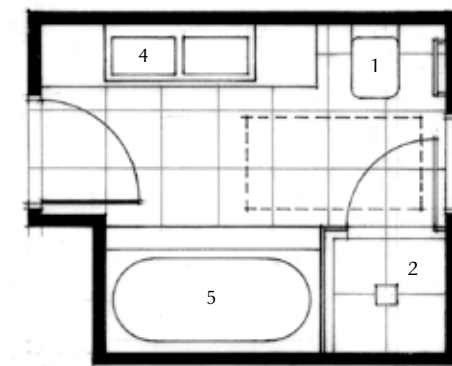


- 1 WC
- 2 Shower
- 3 Washplane
- 4 Vanity
- 5 Bath
- 6 Basin

Guest bathroom plan



Ensuite plan



Family bathroom plan

#### Practice

**Architecture Smith + Scully**  
6/6 Kingsland Terrace, Auckland 1021  
09 845 6249  
[www.smith-scully.com](http://www.smith-scully.com)

**Practice profile:** Architecture Smith + Scully is a design-led practice specialising in residential, interior and hospitality projects.

**Project team:** Carolyn Smith; Hilary Scully; Craig Jansen; Kristan Deed; Norrie Johnson

#### Subcontractors

**Plumber:** Euro Plumbing

**Electrician:** Dyson Bull Electrical

**Tiling and waterproofing:** Fifth Element

**Cabinetry:** RH Cabinetmakers

#### Ensuite products

**Tiles:** Black 440x660mm; cubica venis 333x1000mm blanco gloss; black 440x660mm by Jacobsens

**Basin:** Double washplane geo caesarstone snow by Artedomus

**Basin taps and shower mixers:** Solo; moonshadow square shower columns

**WC:** Acacia by Robertson Agencies

**Heated towel rails:** Sirocco rails by DCS Short

#### Main bathroom products

**Tiles:** Glass mosaic lava coco by Tile Warehouse; white 300x600mm; crème linen 200x450mm; coco brown 450x450mm by Jacobsens

**Basins:** Quadra Neu double by Robertson Agencies

**Vanity top:** Caesarstone quartz - nougat

**Bath:** Drop You by vcbc

**Tapware:** Solo

#### Guest bathroom products

**Tiles:** Glass mosaic lava coco by Tile Warehouse; white 300x 600mm; crème linen 200x450mm; coco brown 450x450mm by Jacobsens

**Basin:** Hatria grandangolo 1300x 500mm by Michel Cesar

**Cabinetry:** Australian blackwood veneer

**Heated towel rails:** Sirocco rails by DCS Short

#### Laundry products

**Tapware:** Solo by Robertson Agencies

**Appliances:** Bosch

**Drying rack:** Artweger Ruckzuck

**Cabinetry:** Laminex seasoned oak; low-pressure laminate; flint finish

#### Time schedule

**Design and planning:** 12 months

**Construction:** 15 months

#### Project areas

**Site size:** 1403m<sup>2</sup>

**Building area:** 375m<sup>2</sup>