

## SMITH BATHROOM

Architecture Smith+Scully

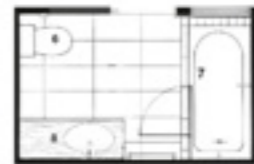
**THE OCCURRENCE OF URBAN** densification in New Zealand cities means that New Zealanders and their architects are now experiencing what a tight site entails. Subdivided sections mean that inner-city sanctuaries become more affordable, but smart design is required in order to make the most of the site and get the most out of the house. Carolyn Smith of Architecture Smith+Scully experienced this when buying an inner-city dwelling, subdividing the section and building her own home at the back of the site.

Due to the section's space restrictions the main bathroom is an internal room. In order to get some natural light into the space, Smith has done two things: Firstly, she has lifted the ceiling height towards the west, placing clerestory windows above the shower, bath and vanity; and secondly, in a more unusual move, she has placed internal frosted glass louvres that open out into an internal stairwell and landing space. The louvres are aligned with louvres on an outside wall across the stairwell, "so you can sit in the bath and look out towards the city and see the Sky Tower", explains Smith, "So, even though it is an internal room, it makes strong connections with the outdoors".

The material palette in the bathroom has been kept reasonably neutral with grey porcelain tiles and white walls. The addition of natural timber adds warmth to the space and the coloured splashback gives life to the room and connects the space with other rooms in the house. "The palette continues the train of thought of the rest of the house," she says. Smith has successfully overcome the preconceived notions of the internal bathroom as being dark and stuffy – a space that you wouldn't want to spend any time in – and has created a light-filled place to relax in. ■



- 1 Entry
- 2 Garage
- 3 Bedroom
- 4 Bathroom
- 5 Family room
- 6 WC
- 7 Bath/shower
- 8 Vanity



**ARCHITECT**  
Architecture Smith+Scully  
6/8 Kingsland Terrace,  
Kingsland, Auckland  
Tel: 09 845 6249  
Fax: 09 845 6259  
Web: www.smith-scully.com

### PRACTICE PROFILE

Architecture Smith+Scully aim to provide high-quality, appropriate and thoughtful residential design with attention to personal service. We consider each client, brief and site as a unique opportunity and believe successful design will enhance people's daily lives through the quality of their environment.

### PROJECT TEAM

Carolyn Smith, Craig Jansen

### BUILDER

Shore Developments, Best Moore

### SUBCONTRACTORS

**Plumber** Mt Albert Plumbing & Gas, Dan Polard

**Electrician** Bob Jones Electrical

**Tiling and water-proofing** Tim the Tiler

### PRODUCTS

**Internal walls** Water-resistant GB8 Paint Dulux, NZ ColorMoo range 'Wholes 170', 'Contempo White Glass' tiles, 'The Warehouse'

**Splashback** Back painted glass, 'Way Out West Glass, Dulux High Sheen'

**Flooring** 'Berica Grigio' tiles, matt finish 300x600 from The Warehouse

**Benchtop** MJB Ply 28mm, clear polyurethane, satin finish; Black Melteca,

smooth finish, in recess **Lighting**

Light Plan 'Architectural Series'

Proflex 'Metro Series' **Toilet**

Robertson Agencies **Basin**

Tocara Vessel Basin, Robertson Agencies **Tapware** Tia basin mixer, Robertson Agencies; Bath mixer 210mm CP spout,

Robertson Agencies **Bath** Liquid Bath, Athena **Shower** Cubic 65 slide shower Solo mixer,

Robertson Agencies

### PHOTOGRAPHY

Emily Andrews

**ABOVE, LEFT:** Even though the bathroom is an internal space, there is plenty of natural light through the clerestory windows and the louvres that open out into the light-filled stairwell.